

.....

Pesch Marinescheinwerfer
Ortsring 2
21423 Winsen
Tel.: +49(0)4171-5684
E-Mail: sales@seematz.de

Seematz

Betriebsanleitung Operating manual



.....

WH 351 LED 24V 150W wide beam

Ersatzteilliste / spare part list

351 LED 24V 150W wb

Description

General design

The Seematz searchlight case and the searchlight bows consist of seawater resistant aluminium. Non-magnetic aluminium of type AlMg3 is used. All other metal parts are made of stainless steel or brass. All coloured parts are powder coated.

Front pane

The front pane consists of hardened glass. It is resistant to temperature changes. Front pane fasteners will keep it in correct position.

Sealing

Inside the searchlight case, behind the front pane, there is a 10x10mm silicone square gasket, which keeps it waterproof. To fix it in position, we use industry silicon.

To seal the plug-in unit we use a 10mm square cord foam rubber seal. To fix it in position, it is self-adhesive.

The sealing of the plug-in unit shall be replaced every 2 years, because of the environmental pollution by salt water and UV radiation.

Illuminant carrier

The illuminant carrier consists of a aluminium carrier plate, LED boards and supplementary lenses. Furthermore are cooling elements and fan installed at the illuminant carrier.

Operation of system

Connect the supplied 3x 1,5mm² cable with an appropriate current source. Switch the searchlight „on/off“ by an external switch (yard supply).

Replacement of illuminant

Caution:

1. Disconnect the power supply before carrying out any work on the searchlight and secure it against being switched on again!
2. Please take care to reinstall the plug-in unit in the same position as before (cable gland must be below).

Open the quick-release snaps at the searchlight case and pull out the plug-in unit. Remove the two plug contacts on the illuminant carrier. Remove the three M10 cap nuts which fix the illuminant carrier. Lift the illuminant carrier of the position rods. Install the new illuminant carrier in reversed order. Reinstall the plug-in unit.

Replacement of plug-in unit

Caution:

1. Disconnect the power supply before carrying out any work on the searchlight and secure it against being switched on again!
2. Please take care to reinstall the plug-in unit in the same position as before (cable gland must be below).

Open the quick-release snaps at the searchlight case and pull out the plug-in unit. Disconnect the wires of the connection cable inside the plug-in unit. Open the cable gland and pull out the connection cable. Connect the cable at the new plug-in unit. Lock the cable gland. Reinstall the plug-in unit.

Adjustment of the illuminant

- LED units are adjusted by the manufacturer. There is no need to adjust a new illuminant carrier.
- The illuminant carriers are divided in a narrow beam (nb) version and a wide beam (wb) version. Characteristic for a narrow beam version is the straight extended beam. Typical for a wide beam version is the wider beam, whereby the beam range is determined by the number of LEDs.

Temperaturemanagement

LED-searchlight with 24VDC supply dim's the LED's caused by increased temperature. If the searchlight is overheated, it will be switching off automatically. After successful cooling the searchlight is switching on automatically.

LED-searchlight with 230VDC supply dim's the LED's caused by increased temperature.

Furthermore, both versions are equipped with a temperature-dependent fan control. This controls the airflow as a function of the temperature on the LED board.

Technical data

Technical data of searchlight:	
Lamp power	150W
Supply voltage	24V
LED type	Cree XP-G3
Current consumption	8,5A
Luminous flux emitted	21879lm
Average life	50.000 Std. acc. to manufacturer
FWHM angle	11°
Light spot at target	170m acc. to DIN, 337m acc. to IES
Range @ 1lx	875m acc. to DIN, 1750m acc. to IES
Operating temperature	-10°C bis +40°C
Protection class	IP56
Weight	27kg
Connection cable	3m, type 3x 1,5mm ²

This technical specification will remain valid until considerable changes force us to publish a new edition.

Steering device type WH

Routine maintenance

The sealing of the plug-in unit shall be replaced every 2 years, because of the environmental pollution by salt water and UV radiation. The nodes of the mechanism shall be occasionally maintained with coating oil or grease, otherwise salt deposits can block the mobility of the searchlight.

The upper bellow (vertical movement) and the lower bellow (horizontal movement) should preferably be checked every year. Ageing because of UV radiation and increased weather factors, wear and tear the mechanical stability of the bellows. In the course of the years, the rubber can become hard or chapped and fails to seal the unit. So it is necessary to change them. Therefore we advise to change them latest after 2-3 years.

Troubleshooting

- Searchlight doesn't illuminate
 - New installations:
 - * Check all wire connections.
 - * Check the fuse
 - Existing installations:
 - * Check all wire connections.
- Searchlight can't be switched off
 - New installations:
 - * Check all wire connections.
 - * Check the power on/off switch
 - Existing installations:
 - * Check the power on/off switch

Ersatzteile / Spare parts

Bitte immer Seriennummer mit angeben! // Please always state the serial no.!

Ohne Seriennummer erfolgt keine Bearbeitung!! // It won't be possible to quote or deliver any spare part without the serial no.!!

Scheinwerfer:	Searchlight:	Part.no.
Scheinwerfereinschub komplett mit Leuchtmittel	plug-in unit, complete with lamp	351- LED- 24V- 150W- wb-0000
Scheinwerfergehaeuse mit Scheibe	Searchlight casing with front pane	351- LED- 24V- 150W- wb-0005
Bügel+Schrauben+PVC Scheiben- WH80	Bow+screws+PVC slider- WH80	351- LED- 24V- 150W- wb-0015
Frontglasscheibe	Front pane	351- LED- 24V- 150W- wb-0030
Scheibenhalter mit Schraube, Set	Front pane fasteners with screw, set	351- LED- 24V- 150W- wb-0035
Scheibendichtung	Front pane sealing	351- LED- 24V- 150W- wb-0040
Einschubdichtung	Plug-in unit sealing	351- LED- 24V- 150W- wb-0045
Leuchtmittelträger	Illuminant carrier	351- LED- 24V- 150W- wb-0050
Abschaltthermostat 70°C	breaking thermostat 70°C	351- LED- 24V- 150W- wb-0080
Kabeldurchfuehrung M25	Cable gland M25	351- LED- 24V- 150W- wb-0090
Heizung 24 VDC	heater 24VDC	351- LED- 24V- 150W- wb-0096
Thermostat Heizung	thermostat heater	351- LED- 24V- 150W- wb-0100
Treiber Seematz 24VDC	driver Seematz 24VDC	351- LED- 24V- 150W- wb-0061
Sicherung 16A träge	Time-lag fuse 16A	351- LED- 24V- 150W- wb-0075
Anschlusskabel 3m, 3 x1,5mm ²	Connection cable 3m, 3 x1,5mm ²	351- LED- 24V- 150W- wb-0095

Säule WH:	Column WH:	Part.no.
Säulenrohr 80mm für WS/WH	Column 80mm for WS/WH	WH-001
Drehrohr 30mm + Buegel für WS/WH	rotary column 30mm for WS/WH	WH-002
Schubstange 20mm, komplett für WS/WH	thrust bar 20mm complete for WS/WH	WH-003
Drucklager unten, PVC	Thrust bearing, PVC, downside	WH-004
Lagerscheibe, V2A	slide bearing disc, inox	WH-005
Befestigungsset großer Bügel	mounting kit large bow	WH-006
Befestigungsset kleiner Bügel	mounting kit small bow	WH-007
Befestigungsset Bügelverbinder	mounting kit junction plate	WH-008
Faltenbalg Set, WS/WH 80	Bellow, set, WS/WH 80	WH-009
Schellen Set, WS/WH 80	clip set, WS/WH 80	WH-010
Bügelverbinder	junction plate	WH-011
Zuglager, PVC, oben	Tension bearing, PVC, upside	WH-012
Gabelgelenk M10	fork joint M10	WH-013
Befestigungsset, Handhebel	mounting kit, handle	WH-014
Handhebel mit Griffstück	handle	WH-015
Sterngriff M10	Star knob M10	WH-016
rastbarer Knebelgriff M10	Snap-in, locking handle M10	WH-017
unterer Stellring 80mm, Aluminium	downside adjustment ring 80mm, aluminium	WH-018

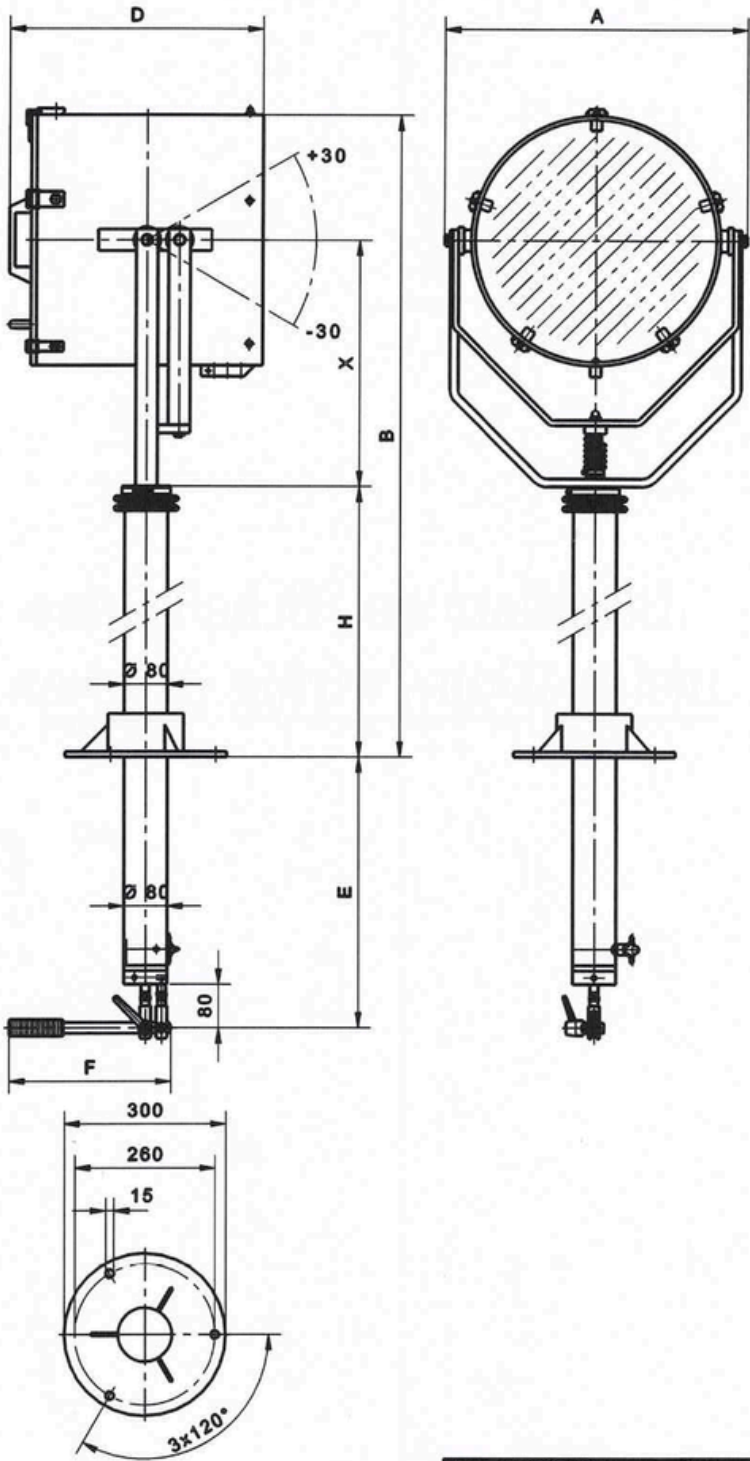
Pesch Marinescheinwerfer , Ortsring 2, D-21423 Winsen


Tel. +49(0)4171-5684






Email: sales@seematz.de

gear type: WH; searchlight type: LED 351

A	B	X	D	E	F	H
449mm	900mm + 686 mm	455 mm	395mm	450mm	300 mm	900mm



Responsible dep. Drawing	Technical reference 93xxx	Created by	Approved by
		Document type Technical drawing	Documents status valid
		Title, Agent, Order No., Project / Hull no. overview sheet WS type V Order No.: Project / Hull No.:	Document number Steering type WH
Rev. 0	Date of issue	Lang. en	Page 1

1	2	3	4															
A	<table border="1" style="width: 100%; border-collapse: collapse;"> <tr> <td style="width: 50%; text-align: center;">Type:</td> <td style="width: 50%; text-align: center;">Supply 1</td> </tr> <tr> <td style="text-align: center;">WH 351 LED 24V 150W wide beam</td> <td style="text-align: center;">24VDC / 340W</td> </tr> </table>		Type:	Supply 1	WH 351 LED 24V 150W wide beam	24VDC / 340W	A											
Type:	Supply 1																	
WH 351 LED 24V 150W wide beam	24VDC / 340W																	
B	Supply 1 LOC:	 <div style="border: 1px solid black; padding: 5px; margin-top: 10px;"> FWD SEARCHLIGHT LOC: CLAMP <table border="1" style="width: 100%; border-collapse: collapse;"> <tr><td style="text-align: center;">01</td></tr> <tr><td style="text-align: center;">02</td></tr> <tr><td style="text-align: center;">PE</td></tr> </table> </div> 	01	02	PE	B												
01																		
02																		
PE																		
C			C															
D			D															
E			E															
F	Stamp and sign here: _____		F															
	<table border="1" style="width: 100%; border-collapse: collapse;"> <tr> <td style="width: 25%;">Responsible dep. Drawing</td> <td style="width: 25%;">Technical reference XXXXX</td> <td style="width: 25%;">Created by WB</td> <td style="width: 25%;">Approved by MKvE</td> </tr> <tr> <td colspan="2" rowspan="2" style="text-align: center;">  </td> <td>Document type Technical drawing</td> <td>Documents status valid</td> </tr> <tr> <td colspan="2"> Title, Agent, Order No., Project / Hull No. Searchlight connection diagram type 24VDC - standard Agent: Order No.: Project / Hull No.: </td> </tr> <tr> <td colspan="2"></td> <td>Rev. 0</td> <td>Date of issue 24.10.2020</td> <td>Lang. en</td> <td>Page 1</td> </tr> </table>	Responsible dep. Drawing	Technical reference XXXXX	Created by WB	Approved by MKvE			Document type Technical drawing	Documents status valid	Title, Agent, Order No., Project / Hull No. Searchlight connection diagram type 24VDC - standard Agent: Order No.: Project / Hull No.:				Rev. 0	Date of issue 24.10.2020	Lang. en	Page 1	
Responsible dep. Drawing	Technical reference XXXXX	Created by WB	Approved by MKvE															
		Document type Technical drawing	Documents status valid															
		Title, Agent, Order No., Project / Hull No. Searchlight connection diagram type 24VDC - standard Agent: Order No.: Project / Hull No.:																
		Rev. 0	Date of issue 24.10.2020	Lang. en	Page 1													
1	2	3	4															