

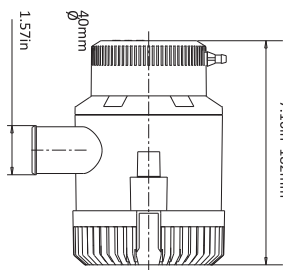
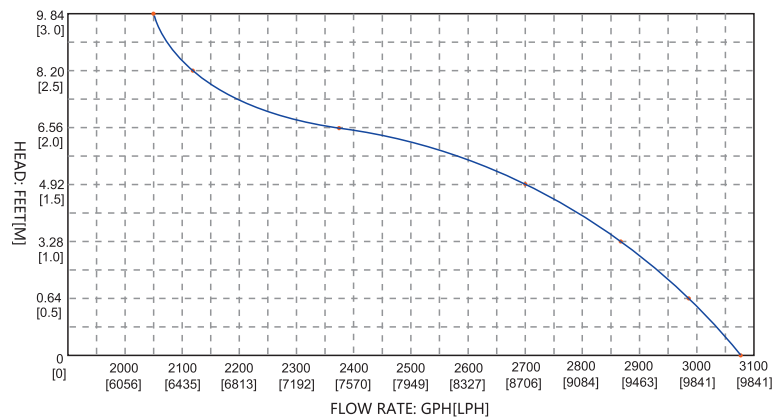


NON - AUTOMATIC BILGE PUMPS 01 SERIES 3500/4700 GPH

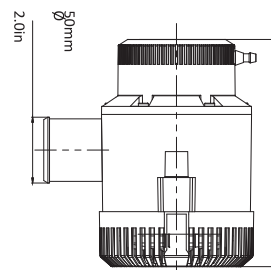
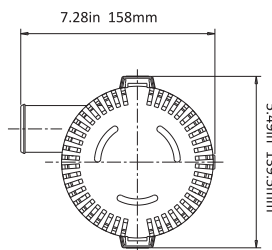
FEATURES

- CE, RoHS, ISO 8846, ISO 8849 standards
- Traditional operation by switch or float switch
- Entirely Submersible
- Run dry capable for workloads
- Quiet operation
- Stainless steel shaft
- Snap-off strainer base for easy maintenance
- Pump and switch are stand alone products
- Sealed efficient, long life motors
- Anti-Airlock protection
- Exclusive moisture tight seals
- Marine grade blocked wiring

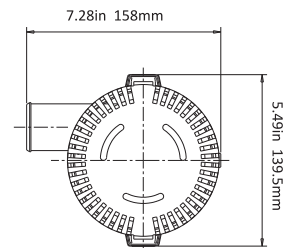
3500GPH PERFORMANCE



3500 GPH



4700 GPH



STANDARD PUMP CONFIGURATIONS

Model	Flow rate	Volts	Current	Head	Wire lead	Outlet Dia.	N.W./G.W.
500527	3500 GPH	24 V	8.0 A	8 m / 26'	1 m / 3'	40 mm/1-1/2"	2.10/2.37 kg
500526	4700 GPH	24 V	8.5 A	8 m / 26'	1 m / 3'	50 mm/2"	2.10/2.37 kg